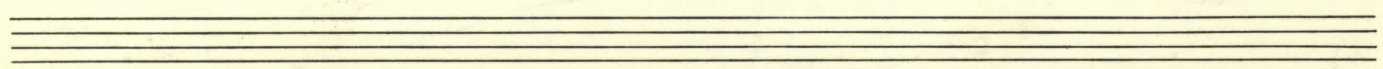
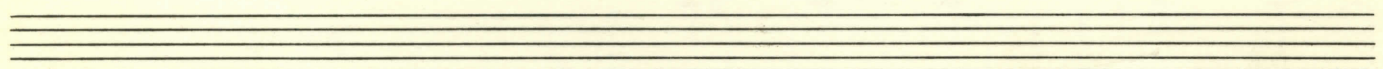
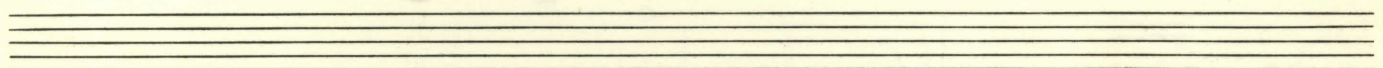
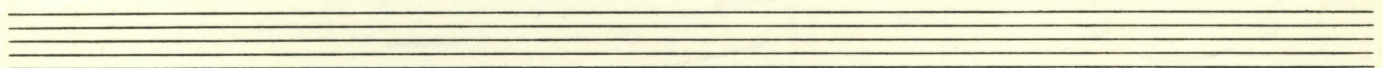
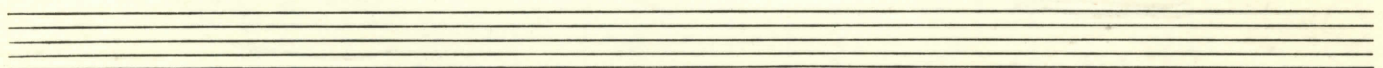
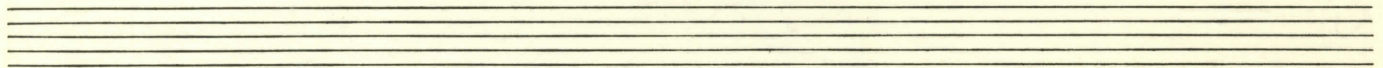
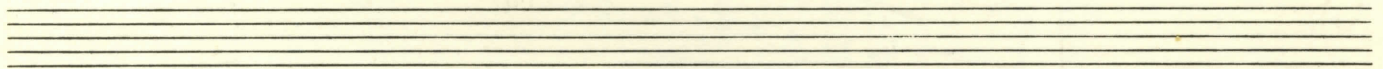
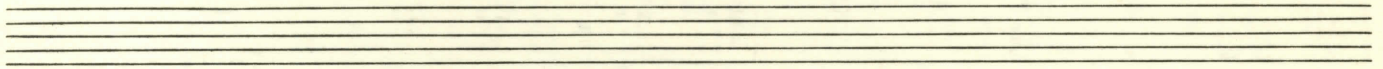
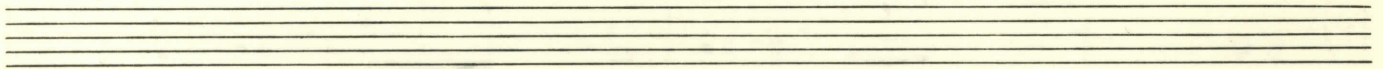
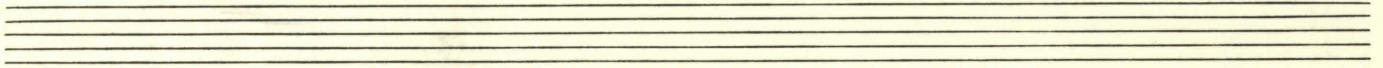
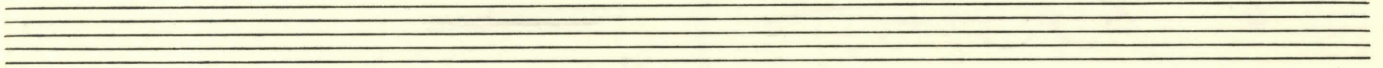
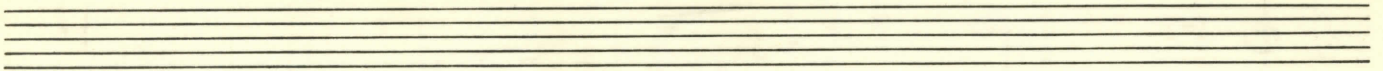


O PALÁCIO

CELLO



CELLO

O PALÁCIO

♩ = 48 (LARGO)

Handwritten musical score for Cello, titled "O PALÁCIO". The score is written on ten staves. It includes various musical notations such as notes, rests, slurs, and articulation marks. Measure numbers 1 through 21 are indicated. Performance instructions include "SOLO" and "OBOÉ". Dynamic markings include "pp" and "p". The score concludes with the lyrics "a minha mãe".

Handwritten musical score for Oboe. The score consists of eight staves of music. The first staff has a treble clef and a 3/4 time signature. The second staff contains the lyrics "já não tenho voz" and "OBOÉ". The third staff continues the musical notation. The fourth staff has a treble clef and a 3/4 time signature. The fifth staff contains the lyrics "o cuidado dos outros" and "SOLO". The sixth and seventh staves contain complex melodic lines with various ornaments and slurs. The eighth staff ends with a double bar line and a fermata. The score includes various musical notations such as triplets, slurs, and dynamic markings.

