

CANTIGAS DO MAMU

Andante

SOLm RE m SOL m RE m SOL m FA DOm7 FA7

MIb RE m SOL m FA DOm7 FA7 MIb RE m SOL m

SIb RE7 SOL m SIb

↓ Presto

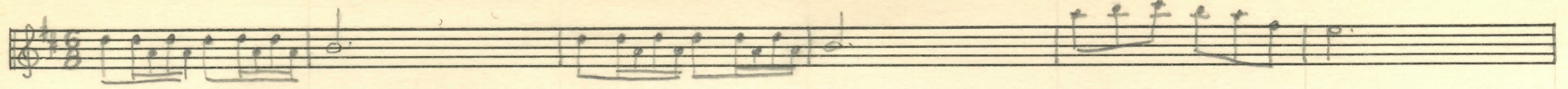
RE7 SOL m

↓ Ral - - - en - - - tan - - - do

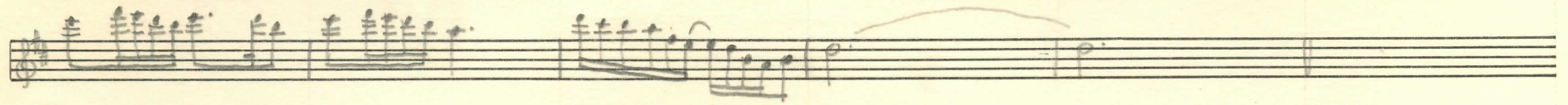
SOL m RE m SOL m RE m



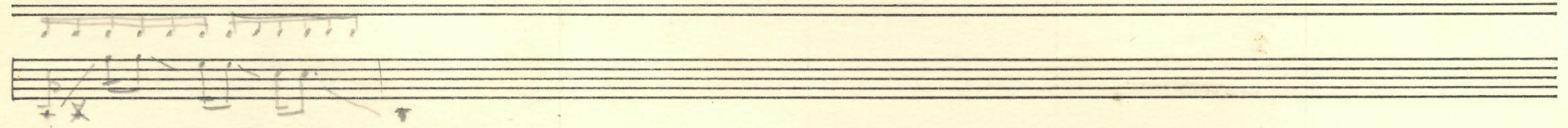
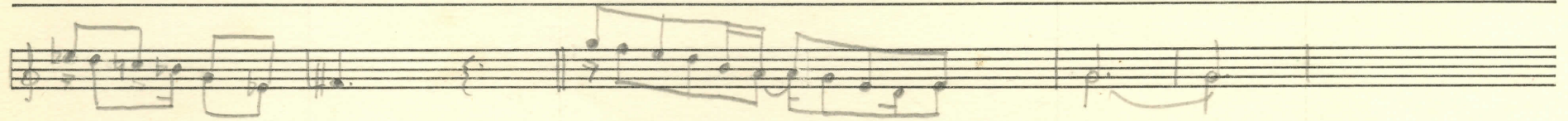
# Ampli Bass : AMPEG (petit)



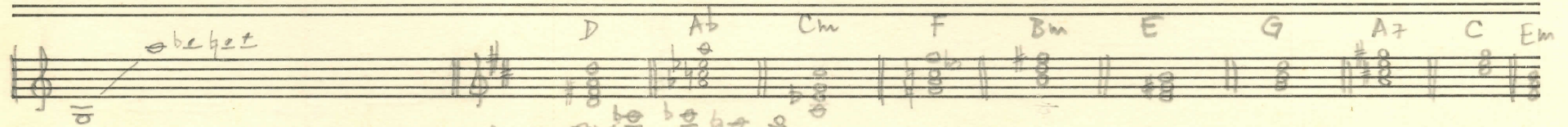
D C7+ D C7+ D C9



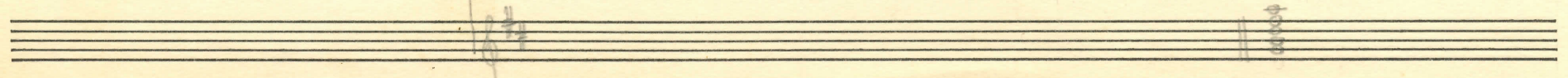
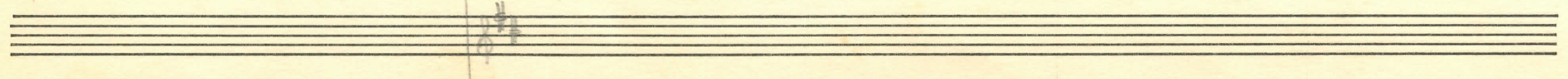
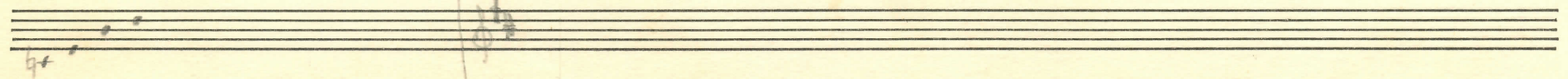
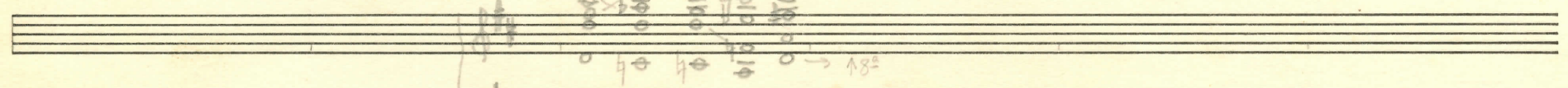
Bm E G D G Bm/E C7+ A7/D D



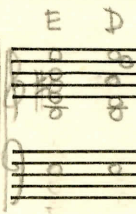
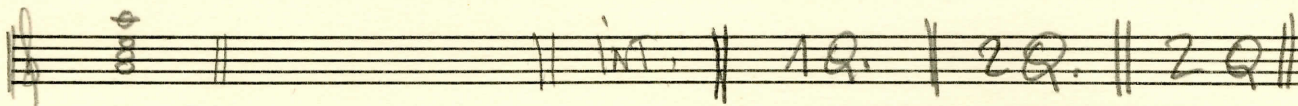
TRAMP.



D Ab Cm F Bm E G A7 C Em







I Milho verde - voz principal  
 - 2ª voz  
 - 3ª voz  
 - 4ª voz

IV - Mais maduro mais

- violão

- VOX

- flauta

~~- coro~~

- trompetas

II - Janda - ~~violão~~  
 - voz

III - Coro da Primavera - órgão  
 - VOX  
 - Coro  
 - flauta  
 - percussão