

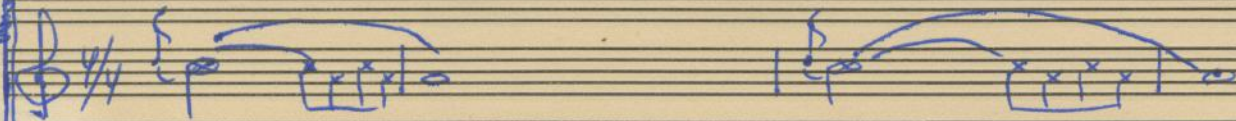
CENA II.

The image shows a handwritten musical score on aged paper, titled "CENA II." at the top. The score is arranged in two systems of staves. The first system includes staves for Violin I (V.), Flute (Fl.), and Piano (P.), with a Percussion (P.) staff below. The second system includes staves for Violin II (V.), Flute (Fl.), and Piano (P.), with a Percussion (P.) staff below. The music is written in blue ink. The first system shows a 3/4 time signature and a key signature of one flat. The Violin I part features a melodic line with a long slur. The Flute part has a similar melodic line with a dynamic marking of *p*. The Piano part consists of chords and single notes. The Percussion part has a simple rhythmic pattern. The second system continues the music, with a double bar line at the end of the first measure. The Violin II part has a melodic line with a slur. The Flute part has a melodic line with a slur. The Piano part consists of chords and single notes. The Percussion part has a simple rhythmic pattern. The score is written on a page with a vertical margin on the left side.

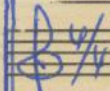
Francisco Guimarães, F.º & C.ª — R. do Almada, 130 — PORTO

CENA II

Viol.



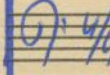
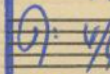
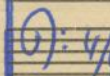
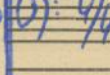
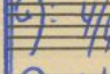
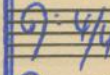
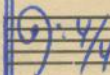
Fl.



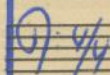
~~Corno~~

Francisco Guimarães, F. & C. a

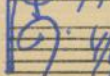
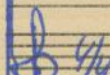
Alameda, 130 --- POBUNO



TB.



D. }
P.



ANDANTE
♩ = 30

CENA II

7A

FL
CL
P

mp cresc.

Francisco Guimarães, F.º & C.ª — R. do Almada, 130 — POETO

F
C
P

mf dim.

FL
CL
P

mp cresc.

mf dim.

(6)

(12)

(18)

7A

FL

C.

P.

mp

p ~~ritardando~~

24

P.

accelerando ~~ritardando~~

f

ritardando

mp

30

FL.

CL.

CEL.

Piano

p

mp

mf

36

Handwritten musical score for a string quartet, featuring parts for Flute (Fl.), Clarinet (Cl.), Violin (V.), Viola (Va.), Cello (Ca.), and Double Bass (B.). The score is divided into two systems by a red line. The first system contains measures 1 through 12, and the second system contains measures 13 through 24. The music is written in a common time signature (C) and includes various dynamics such as *p*, *mp*, *mf*, and *f*. The score includes notes, rests, and articulation marks like slurs and accents. A red line is drawn across the middle of the page, separating the two systems. The page number 42 is circled in the top right corner, and the page number 48 is circled in the bottom right corner. The publisher's name, Francisco Guimarães, F.º & C.ª - R. do Almada, 180 - PORTO, is printed vertically on the left side of the page.

Francisco Guimarães, F.º & C.ª - R. do Almada, 180 - PORTO

42

48

pp embato

7A

Fl.

C2.

CE2.

P.

mp

mp

mp

54

Fl.

C2.

CE2.

P.

mp

f

pp

mp

f

mp

rit. un poco

62