

PRESTO

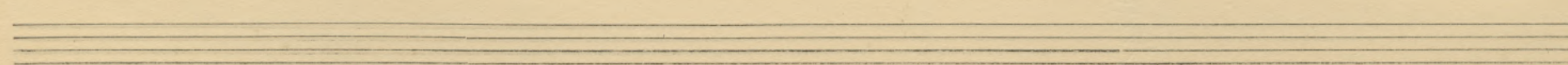
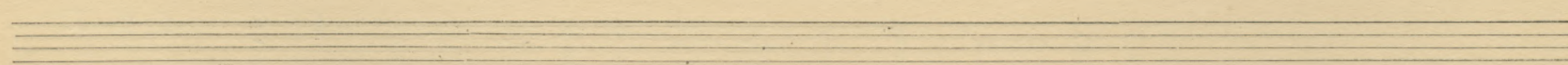
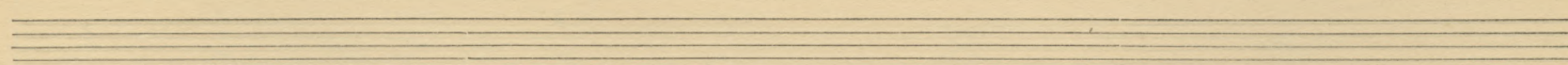
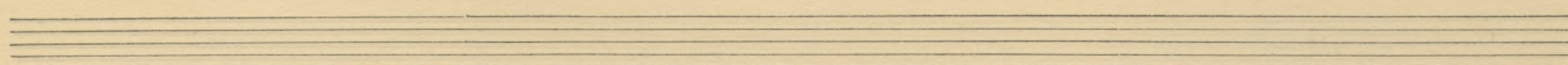
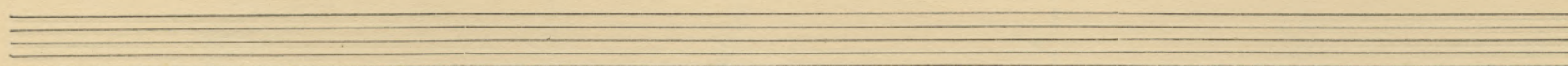
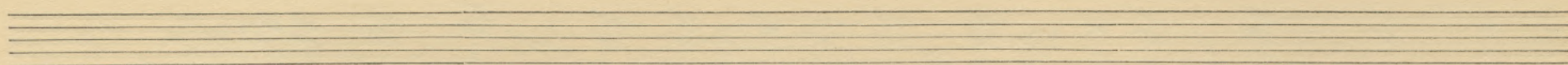
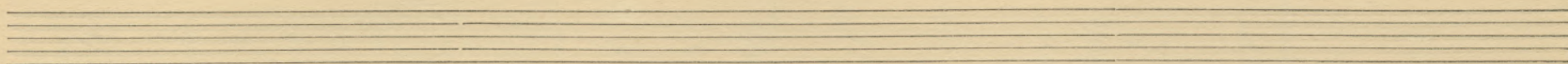
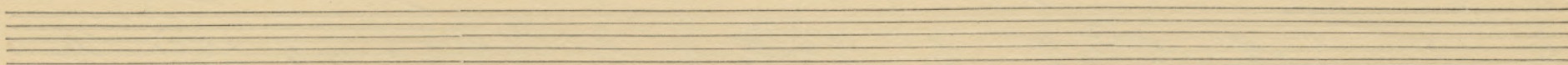
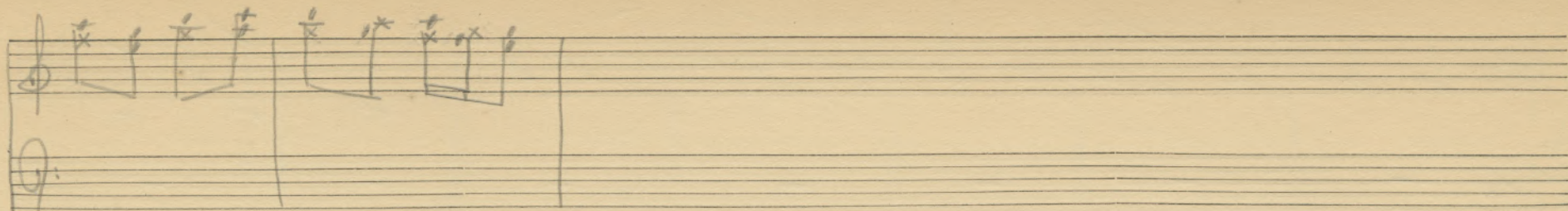
Handwritten musical notation for the first system. The treble clef staff is in 2/4 time and contains a sequence of eighth and sixteenth notes, many with an 'x' above them. The bass clef staff is in 2/4 time and is mostly empty, with a few notes.

Handwritten musical notation for the second system. The treble clef staff shows a complex rhythmic pattern with various time signatures (3/4, 2/4, 4/4) and the bass clef staff has corresponding notes and rests.

Handwritten musical notation for the third system. The treble clef staff contains a series of eighth notes with 'x' marks, and the bass clef staff has notes and rests.

Handwritten musical notation for the fourth system. The treble clef staff has notes with 'x' marks and the bass clef staff has notes and rests.

Handwritten musical notation for the fifth system. The treble clef staff has notes with 'x' marks and the bass clef staff has notes and rests.



Handwritten musical notation, first system. The top staff is in treble clef with a key signature of one sharp (F#) and a time signature of 6/8. The bottom staff is in bass clef with the same key signature and time signature. The music consists of two measures of rests, followed by a double bar line, and then four measures of music. The first measure of the second system has a whole note with a fermata. The second measure has a half note with a fermata. The third and fourth measures each have a half note with a fermata. The fifth measure has a half note with a fermata. The sixth measure has a half note with a fermata. The seventh measure has a half note with a fermata. The eighth measure has a half note with a fermata. The ninth measure has a half note with a fermata. The tenth measure has a half note with a fermata.

Handwritten musical notation, second system. The top staff is in treble clef with a key signature of two flats (Bb, Eb) and a time signature of 6/8. The bottom staff is in bass clef with the same key signature and time signature. The music consists of two measures of rests, followed by a double bar line, and then four measures of music. The first measure of the second system has a whole note with a fermata. The second measure has a half note with a fermata. The third and fourth measures each have a half note with a fermata. The fifth measure has a half note with a fermata. The sixth measure has a half note with a fermata. The seventh measure has a half note with a fermata. The eighth measure has a half note with a fermata. The ninth measure has a half note with a fermata. The tenth measure has a half note with a fermata.

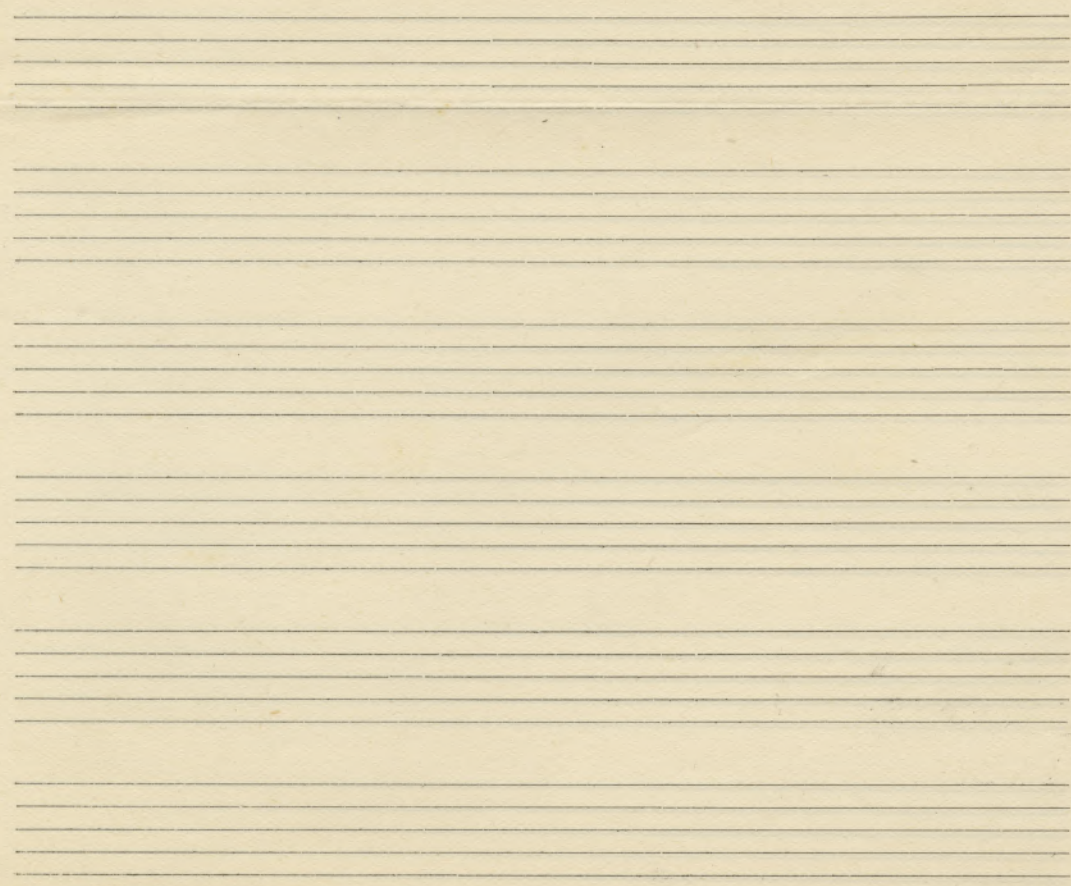
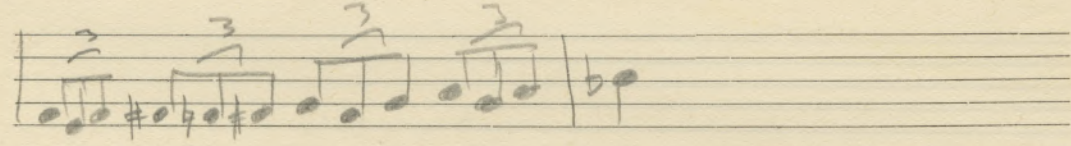
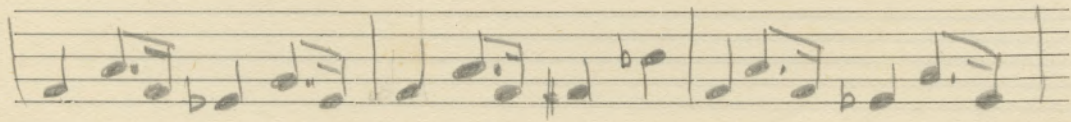
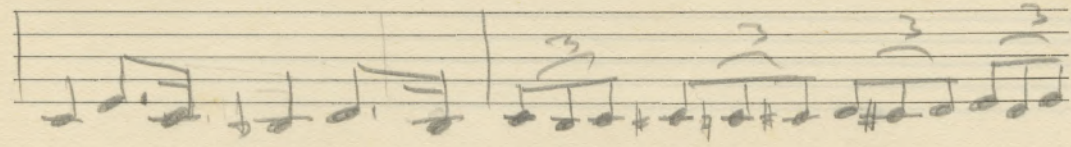
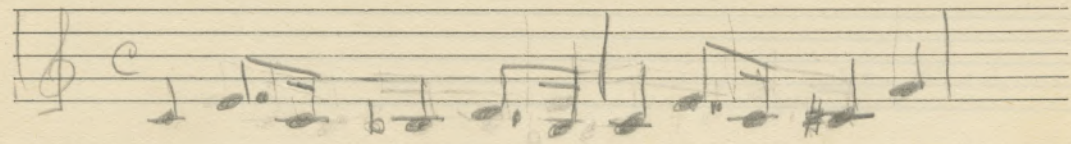
Blank musical notation, third system. The top staff is in treble clef and the bottom staff is in bass clef. The system is divided into four measures by vertical bar lines.

Blank musical notation, fourth system. The top staff is in treble clef and the bottom staff is in bass clef. The system is divided into four measures by vertical bar lines.

Blank musical notation, fifth system. The top staff is in treble clef and the bottom staff is in bass clef. The system is divided into four measures by vertical bar lines.

LENTO

The image shows a page of ten musical staves. The top three staves contain handwritten musical notation. The first staff begins with a treble clef and a 3/4 time signature. It contains several notes, some with dynamic markings such as 'p' (piano) and 'f' (forte). The second staff has a bass clef and a 3/4 time signature, featuring notes and a bracketed triplet. The third staff also has a bass clef and a 3/4 time signature with notes. The remaining seven staves are empty.



Handwritten musical notation on a grand staff (treble and bass clefs). The time signature is 6/8. The notation includes rhythmic markings (slashes and flags) and chord diagrams (boxes with 'x' marks) for both hands.

Handwritten musical notation on a grand staff. The notation includes rhythmic markings and chord diagrams for both hands.

Handwritten musical notation on a grand staff. The notation includes rhythmic markings and chord diagrams for both hands.

Handwritten musical notation on a grand staff. The notation includes rhythmic markings and chord diagrams for both hands.

Empty grand staff lines at the bottom of the page.

Handwritten musical notation for the first system. The top staff is in treble clef with a 4/4 time signature. The bottom staff is in bass clef. The music consists of several measures with notes and chords, some marked with 'x'.

Handwritten musical notation for the second system. The top staff is in treble clef. The bottom staff is in bass clef. The music consists of several measures with notes and chords, some marked with 'x'.

Handwritten musical notation for the third system. The top staff is in treble clef. The bottom staff is in bass clef. The music consists of several measures with notes and chords, some marked with 'x'.

Four empty musical staves, each consisting of five horizontal lines, arranged vertically.

Handwritten musical notation for the first system. The top staff is in treble clef with a common time signature (C). It contains a sequence of notes, including quarter and eighth notes, with some notes marked with an 'x'. The bottom staff is in bass clef and contains a series of chords, some marked with an 'x'. The system concludes with a triplet of eighth notes in the treble staff.

Handwritten musical notation for the second system. The top staff continues the melody with quarter and eighth notes, some marked with 'x'. The bottom staff contains chords and rests. The system ends with a triplet of eighth notes in the treble staff.

Handwritten musical notation for the third system. The top staff features a melodic line with quarter and eighth notes, some marked with 'x'. The bottom staff contains chords and rests. The system concludes with a triplet of eighth notes in the treble staff.

Handwritten musical notation for the fourth system. The top staff includes rests and melodic phrases with quarter and eighth notes, some marked with 'x'. The bottom staff contains chords and rests. The system ends with a triplet of eighth notes in the treble staff.

Handwritten musical notation for the fifth system. The top staff contains a melodic line with quarter and eighth notes, some marked with 'x'. The bottom staff contains chords and rests. The system concludes with a triplet of eighth notes in the treble staff.

Handwritten musical notation on a single staff. It begins with a treble clef and a whole rest. The first measure contains a quarter note with an 'x' and a triplet of eighth notes, with a circled '3' above it. The second measure is a whole rest. The third measure contains a quarter note with an 'x' and a quarter note. The fourth measure contains a quarter note with an 'x' and a quarter note. The fifth measure contains a quarter note with an 'x' and a quarter note. The sixth measure contains a quarter note with an 'x' and a quarter note. The seventh measure contains a quarter note with an 'x' and a quarter note. The eighth measure contains a quarter note with an 'x' and a quarter note. The ninth measure contains a quarter note with an 'x' and a quarter note. The tenth measure contains a quarter note with an 'x' and a quarter note. The eleventh measure contains a quarter note with an 'x' and a quarter note. The twelfth measure contains a quarter note with an 'x' and a quarter note.

Handwritten musical notation on a single staff. It begins with a treble clef and a whole rest. The first measure contains a quarter note with an 'x' and a quarter note. The second measure contains a quarter note with an 'x' and a quarter note. The third measure contains a quarter note with an 'x' and a quarter note. The fourth measure contains a quarter note with an 'x' and a quarter note. The fifth measure contains a quarter note with an 'x' and a quarter note. The sixth measure contains a quarter note with an 'x' and a quarter note. The seventh measure contains a quarter note with an 'x' and a quarter note. The eighth measure contains a quarter note with an 'x' and a quarter note. The ninth measure contains a quarter note with an 'x' and a quarter note. The tenth measure contains a quarter note with an 'x' and a quarter note. The eleventh measure contains a quarter note with an 'x' and a quarter note. The twelfth measure contains a quarter note with an 'x' and a quarter note.

Handwritten musical notation on a single staff. It begins with a treble clef and a whole rest. The first measure contains a quarter note with an 'x' and a quarter note. The second measure contains a quarter note with an 'x' and a quarter note. The third measure contains a quarter note with an 'x' and a quarter note. The fourth measure contains a quarter note with an 'x' and a quarter note. The fifth measure contains a quarter note with an 'x' and a quarter note. The sixth measure contains a quarter note with an 'x' and a quarter note. The seventh measure contains a quarter note with an 'x' and a quarter note. The eighth measure contains a quarter note with an 'x' and a quarter note. The ninth measure contains a quarter note with an 'x' and a quarter note. The tenth measure contains a quarter note with an 'x' and a quarter note. The eleventh measure contains a quarter note with an 'x' and a quarter note. The twelfth measure contains a quarter note with an 'x' and a quarter note. The notation includes a bracket labeled '8^{va}' over the first two measures, a bracket labeled 'IN LOCO' over the third and fourth measures, and a wavy line labeled 'TR.' over the eighth and ninth measures.

Four sets of empty musical staves, each consisting of five lines.

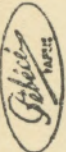
Handwritten musical notation for the first system, consisting of three staves. The top staff is in treble clef with a 2/4 time signature, containing a melody of quarter and eighth notes, some with asterisks. The middle staff is in bass clef with a 2/4 time signature, containing a sequence of chords with stems pointing right. The bottom staff is in bass clef with a 2/4 time signature, containing a sequence of chords with stems pointing down.

Handwritten musical notation for the second system, consisting of three staves. The top staff is in treble clef with a 2/4 time signature, containing a melody of quarter and eighth notes, some with asterisks. The middle and bottom staves are empty.

Handwritten musical notation for the third system, consisting of three empty staves. The top staff has a treble clef, and the middle and bottom staves are empty.

Handwritten musical notation on two staves. The first staff begins with a treble clef, a key signature of one sharp (F#), and a common time signature (C). The word "Lento" is written above the first few notes. The notation consists of a series of eighth and sixteenth notes, some beamed together, with vertical bar lines indicating measures. The second staff continues the melodic line with similar rhythmic patterns.

Eight empty musical staves, each consisting of five horizontal lines, arranged vertically down the page.



V. $\frac{4}{4}$ f x x x x o f x x x x o

Pr. $\frac{4}{4}$ pp x x x x o pp x x x x o

$\frac{4}{4}$

$\frac{4}{4}$ 7A --- x x x x o