

MAIO MADURO MAIO

69 compassos

A

1. VOZ



2. VIOLA



3. BAIXO



4. FLAUTA



5. TROMPETE I



6. TROMPETE II

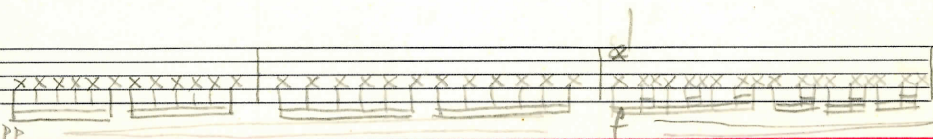


7. CORO (4 vozes)



8. PERCUSSÃO

PRATO
C. RUFO

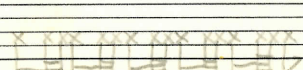


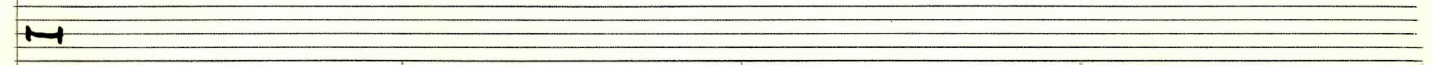
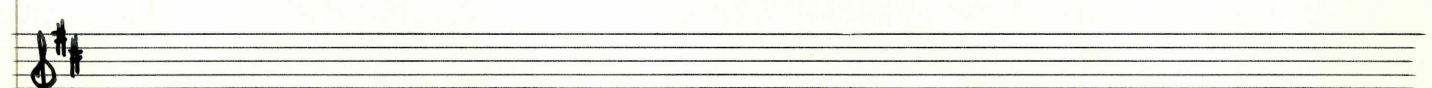
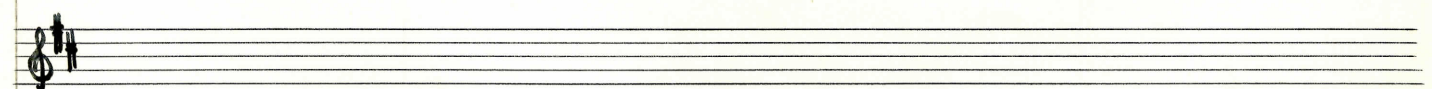
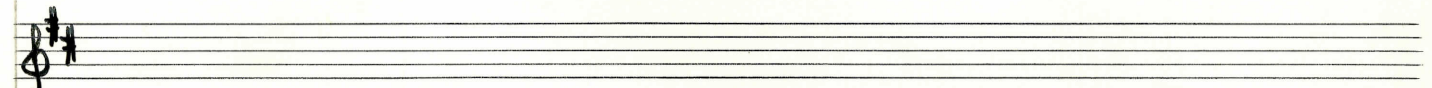
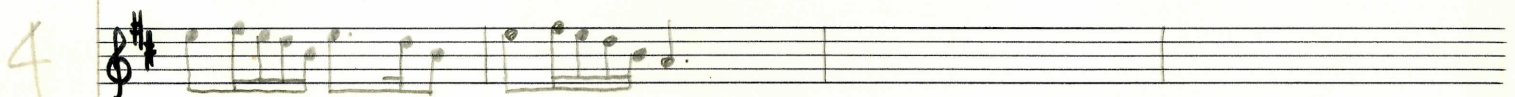
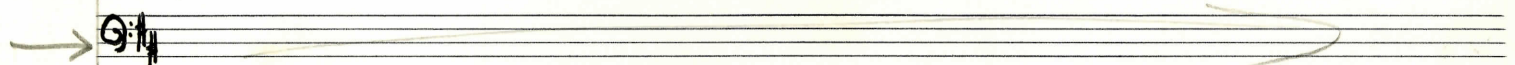
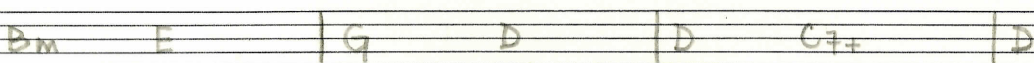
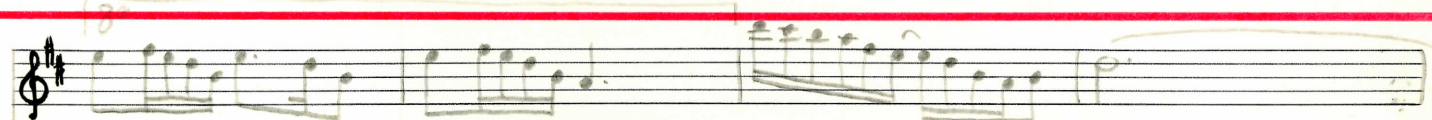
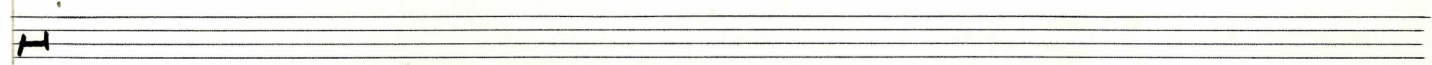
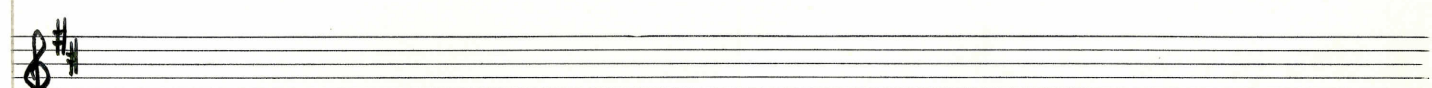
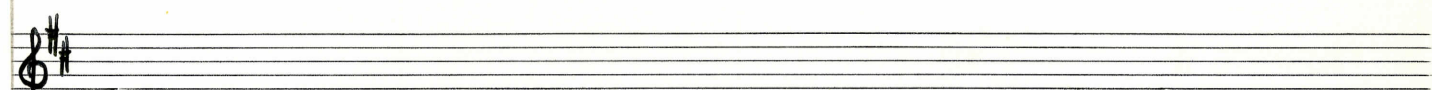
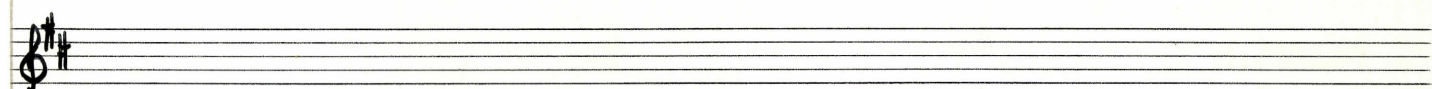
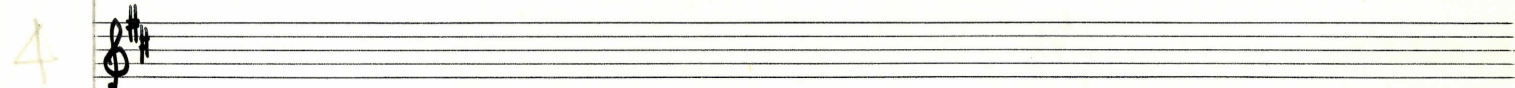
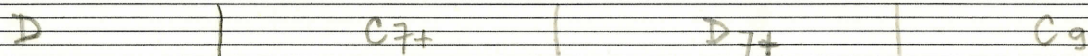
C7+

D

D

C7+





Handwritten musical notation for a guitar piece. The system includes a treble clef staff with a whole note chord 'C7+', a bass clef staff with a whole note chord 'D' and a slash, and a guitar staff with a whole note chord 'C7+'. The guitar staff contains a melodic line starting with a whole note chord 'C7+', followed by a series of eighth notes. The guitar staff also includes a tablature section with 'x' marks and 'p' markings.

Handwritten musical notation for a second guitar piece. The system includes a treble clef staff with a whole note chord 'D', a bass clef staff with a whole note chord 'D' and a slash, and a guitar staff with a whole note chord 'D'. The guitar staff contains a melodic line starting with a whole note chord 'D', followed by a series of eighth notes. The guitar staff also includes a tablature section with 'x' marks and 'p' markings.

Musical staff with treble clef, key signature of one sharp (F#), and 6/8 time signature.

Chord progression: D / | C Em/A D7/G /

→ Bass clef staff with treble clef, key signature of one sharp (F#), and 6/8 time signature.

4 Treble clef staff with treble clef, key signature of one sharp (F#), and 6/8 time signature.

Musical staff with treble clef, key signature of one sharp (F#), and 6/8 time signature. Contains a melodic line with a fermata.

Musical staff with treble clef, key signature of one sharp (F#), and 6/8 time signature. Contains a melodic line with a fermata.

Musical staff with treble clef, key signature of one sharp (F#), and 6/8 time signature.

Musical staff with bass clef, key signature of one sharp (F#), and 6/8 time signature. Contains a guitar fretboard diagram with 'x' marks and a dynamic marking 'f'.

(B) Musical staff with treble clef, key signature of one sharp (F#), and 4/4 time signature.

Chord progression: C7+ | D

→ Bass clef staff with treble clef, key signature of one sharp (F#), and 4/4 time signature. Contains a melodic line with a fermata.

4 Treble clef staff with treble clef, key signature of one sharp (F#), and 4/4 time signature. Contains a melodic line with a fermata.

Musical staff with treble clef, key signature of one sharp (F#), and 4/4 time signature.

Musical staff with treble clef, key signature of one sharp (F#), and 4/4 time signature.

Musical staff with treble clef, key signature of one sharp (F#), and 4/4 time signature.

Musical staff with bass clef, key signature of one sharp (F#), and 4/4 time signature. Contains a guitar fretboard diagram with 'x' marks and dynamic markings 'p', 'f', and 'p'.

Musical notation system 1: Treble clef, key signature of two sharps (F# and C#), 4/4 time signature. The melody consists of eighth notes in pairs. The chord progression below is D, C7+, D, C7+.

Musical notation system 2: Treble clef, key signature of two sharps (F# and C#), 4/4 time signature. The melody features a half note followed by a quarter note, with a slur over the first two measures. The chord progression below is D, C7+, D, C7+.

Musical notation system 3: Treble clef, key signature of two sharps (F# and C#), 4/4 time signature. The melody consists of eighth notes in pairs. The chord progression below is D7+, C9, Bm, E, G, D.

Musical staff 1 (treble clef, D major key signature): *f* melodic line with slurs and accents.

Chord progression: D C7+ | D A^b Cm F D/

Musical staff 2 (bass clef): *p* melodic line.

Musical staff 3 (treble clef): *4* melodic line with slurs.

Musical staff 4 (treble clef): *4* melodic line.

Musical staff 5 (treble clef): *4* melodic line.

Musical staff 6 (treble clef): Chords with *trio.* and *quarto.* markings.

Musical staff 7 (bass clef): Rhythmic notation with 'x' marks and *p* dynamics.

Musical staff 8 (treble clef): Melodic line.

Chord progression: C7+ D D

Musical staff 9 (bass clef): *p* melodic line.

Musical staff 10 (treble clef): *4* melodic line.

Musical staff 11 (treble clef): Empty staff.

Musical staff 12 (treble clef): Empty staff.

Musical staff 13 (treble clef): Chords with *trio.* and *quarto.* markings.

Nu - na nu - a com -

Musical staff 14 (bass clef): Rhythmic notation with *f* dynamics.

Handwritten musical score for guitar, featuring a treble clef staff with a key signature of one sharp (F#) and a 4/4 time signature. The melody is written in the treble clef, and the guitar accompaniment is written in the bass clef. The lyrics are written below the guitar staff.

Chords: C7+, D, C7+, D7+

Lyrics: *pi-da ven-do-se-ro da vi-da*

Handwritten notes: *dec.*, *thos*

Handwritten musical score for guitar, featuring a treble clef staff with a key signature of one sharp (F#) and a 4/4 time signature. The melody is written in the treble clef, and the guitar accompaniment is written in the bass clef. The lyrics are written below the guitar staff.

Chords: Cg, Bm, E, G, D, G, Bm/E, A7

Lyrics: *mai nas ceu*

CODE

Handwritten musical score for guitar, featuring a treble clef staff with a key signature of one sharp (F#) and a common time signature (C). The score includes a guitar tablature staff at the bottom with fret numbers and a red horizontal line. The lyrics "a - tu - ba a - tu - ba a - tu - ba - non" are written below the staff. The score is divided into two measures by a double bar line.

Chords: D, Ab, Cm, F, G, Bm/E, A7/C, Em/A, D7

Lyrics: a - tu - ba a - tu - ba a - tu - ba - non

Handwritten musical score for guitar, featuring a treble clef staff with a key signature of one sharp (F#) and a common time signature (C). The score includes a guitar tablature staff at the bottom. The score is divided into two measures by a double bar line.

Chords: G, G7