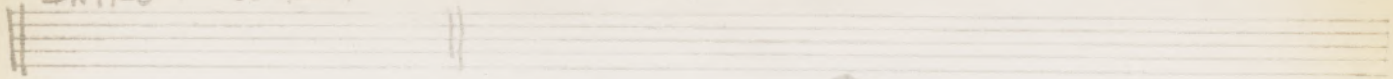
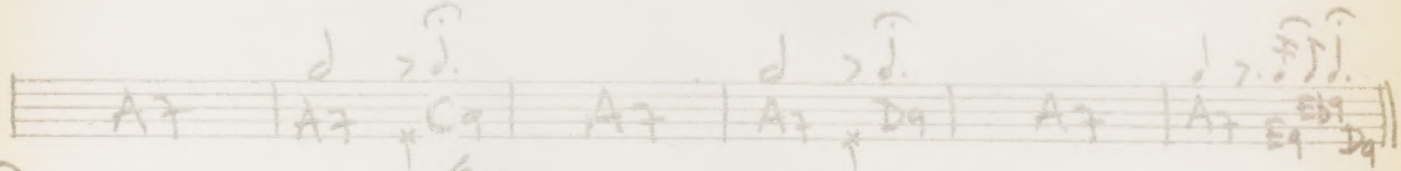
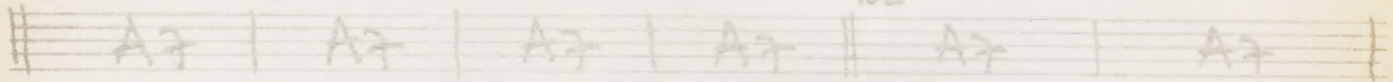


INTRO : 6/2M

PAO ORGAN 2

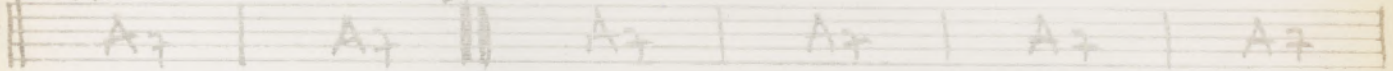


1 VOZ

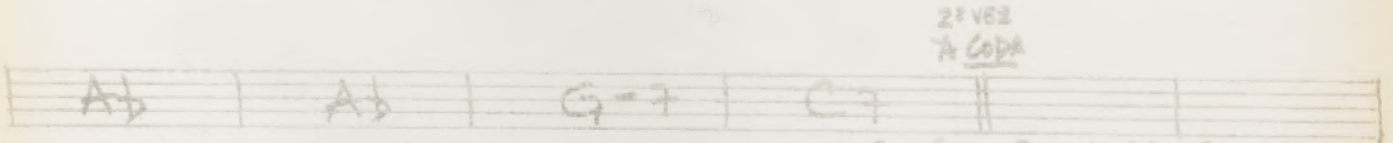
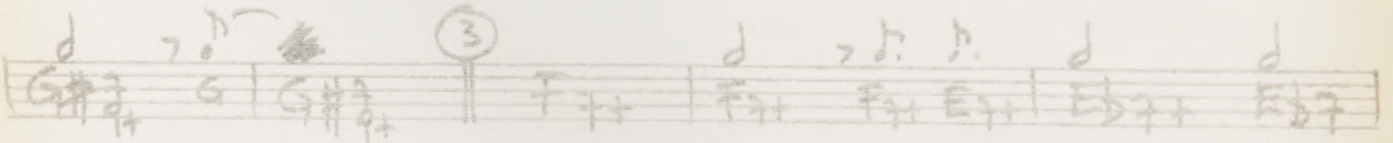
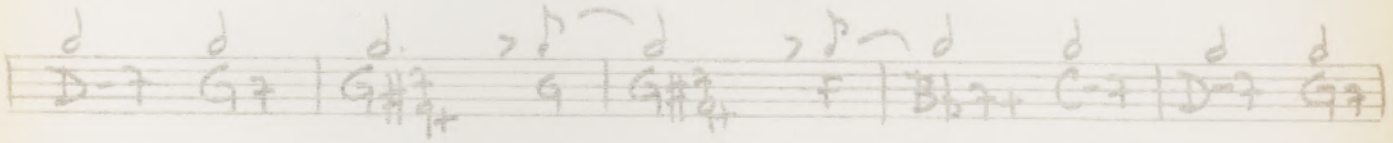
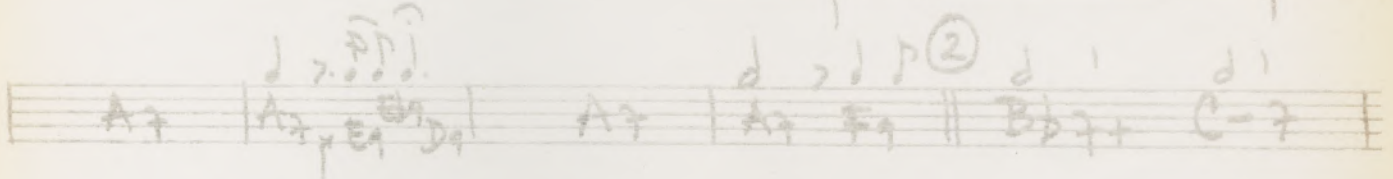
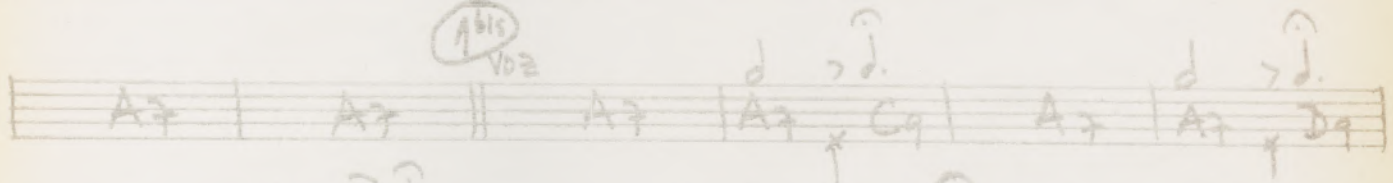


1 VOZ (M)

NOTAS MÚLTIPLES

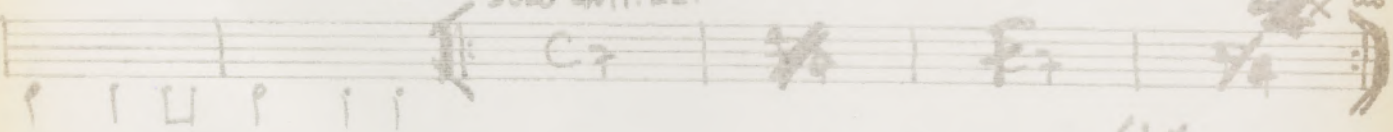


ABIS VOZ

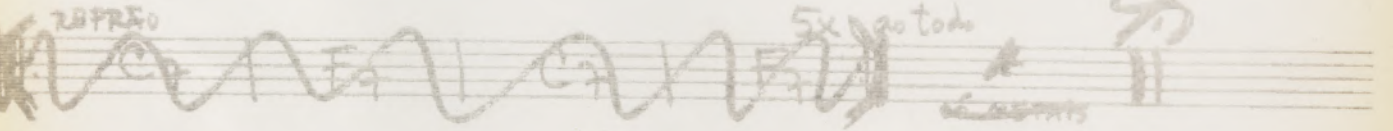


2ª VEZ A CODA

(R) RITMO DOBRADO SOLO GUIT. EL.



4x ao todo



REPETIDO

5x ao todo

CODA

ATE MANDAR PARAR!

