

Abertura+Cabaret

prato

1 **Rapido 3**

129

133

138

143 **Rapido 4**

148

153

158

163

168

173 **Rapido 5**

178

The image shows a musical score for a piece titled "Abertura+Cabaret" for the instrument "prato". The score is written on ten staves, each representing a measure of music. The first staff starts with a measure number "1" and a time signature of 2/4. A section marked "Rapido 3" begins at measure 129. The second staff is numbered 133, the third 138, the fourth 143 (marked "Rapido 4"), the fifth 148, the sixth 153, the seventh 158, the eighth 163, the ninth 168, the tenth 173 (marked "Rapido 5"), and the eleventh 178. The notation includes various rhythmic symbols such as diamond-shaped notes, vertical stems, and beams, along with dynamic markings like accents and slurs. The overall style is that of a traditional Brazilian musical score.

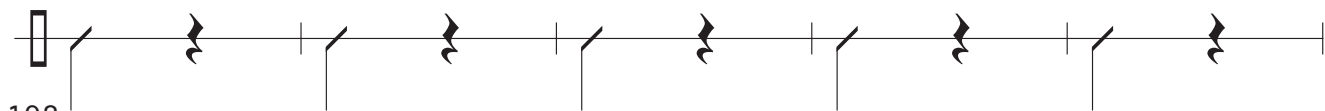
183



188



193



198



203

